



TRYMANSION BENCHMARKING

TryMansion is the DyeMansion benchmarking service to get to know our technology and learn what our 'Print-to-Product' workflow is capable of. See the results of our finishing technology on your own raw-parts!

TRYMANSION STEP BY STEP

1) Get in touch with us

To find the right finish for your application, we're happy to advise you. Please provide us with information on your raw material, finish and desired color.

2) Send us up to 3 of your raw-parts

If possible, please send us your parts undepowdered and attach a delivery note with all information needed.

3) DyeMansion Print-to-Product workflow

Your raw parts will run through the whole DyeMansion Print-to-Product workflow: surface gently part cleaning with the Powershot C, surface homogenization with the Powershot S and in the final step, coloring of your parts in your desired DyeMansion standard colors with our DM60.

4) We send your finished sample parts back to you

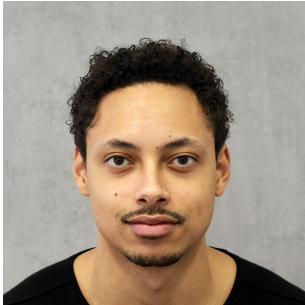
The trial service is free! We only charge you the shipping costs. The standard lead time for the TryMansion benchmarking depends on the scope of delivery. Please contact us for the estimated date of delivery.

GUIDELINES

Please take the following considerations, preparations and requirements into account to achieve best results.

- ✓ To achieve the best finishing quality, please send us your undepowdered parts.
- ✓ DyeMansion cannot take any responsibility for damages or color mismatches caused by preparation with manual blasting.
- ✓ All parts must have a constant density.
- ✓ Please be aware that a wall thickness < 1 mm and fragile parts or components (like small antennas that may stick out) are prone to damages. Wall thickness of < 2 mm leads to color variations.
- ✓ Please be aware of the maximum dimensions of the part: 39cm diameter and 36cm height.
- ✓ Only parts with a white raw material can be dyed in all RAL/Pantone colors. Polluted or yellowed parts lead to color variations. All non-white parts (e.g. grey MJF, black PA11, etc.) can only be dyed in black.
- ✓ The raw material must withstand temperatures above 115°C. Please always indicate the type of material and highlight temperature properties that deviate from PA12.
- ✓ DyeMansion does not (dis-)assemble any part components.
- ✓ All parts must be sorted and packaged in separately labelled plastic bags stating the desired color and related amount of the parts.
- ✓ Every package needs a delivery note.
- ✓ Please contact us directly for individual inquiries.

CONTACT & SHIPPING ADDRESS



DyeMansion Europe, APAC
Michael Vollmuth
Inside Sales
michael@dyemansion.com
+49 89 4141705 05

Shipping address:
DyeMansion Europe
Robert-Koch-Straße 1
82152 Planegg-München
Germany



DyeMansion North America
Daniel Stroh
Sales & Operations, NA
daniel@dyemansion.com
+1 (415) 996 8115

Shipping address:
DyeMansion North America
3813 Helios Way, #B298
Pflugerville, TX 78660
United States